

Exodus 25-31 Kids Pack



Auburn & Newington Anglican Churches
a special taste of heaven

Last week in Exodus 19-24, we saw how God gave his saved people special rules in order to direct them on how they are to love Him and love others. We saw that the Israelites wanted to obey God but very quickly they failed to trust God and live the way God directs them. This week in Exodus 25-31, we will see how our loving God deeply desires to live with his people. He gives Israel specific instructions for them to build a special tent in order that this might be possible...



Watch: this week's livestream kids talk by Kate (Newington Kids Church Leader)!

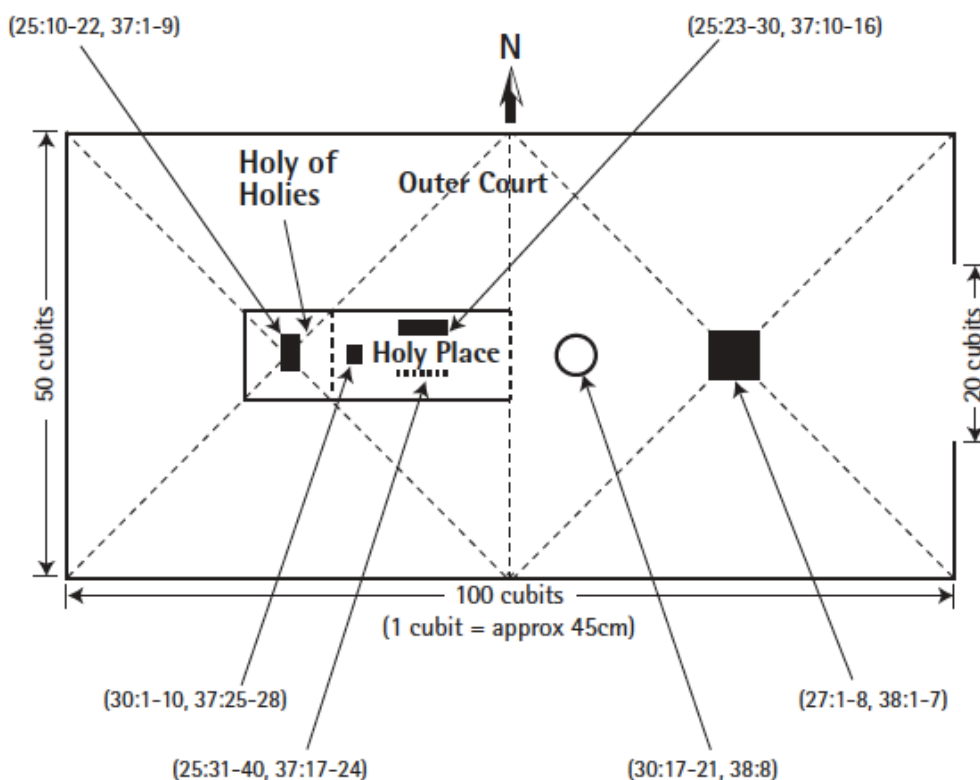


Read the bible & discuss:

For Youth

For us today, the idea of a tabernacle might sound a little strange. However, in the ancient world, not only was it common for nations outside of Israel to build structures for their gods to dwell in but for a nomadic people like Israel, the idea of a tabernacle would also symbolise a home for them.

1. Read Ex. 25:8-9. Why and how are they to build the sanctuary and tabernacle?
2. Write the names of the main items of furniture that the arrows are pointing to.



4/09/2021

3. Read 1 Cor. 3:16-17 & Eph. 2:22. How does God now dwell with us as those saved in Christ?
4. How does this truth change the way you see your identity and purpose in life?

For Younger kids

1. If you could live with anyone in the world, whom would you like to live with?
2. What did God ask Moses to build?
3. Why did God ask Moses to build this?
4. What were some of the things it was to be made from?
5. Today, we don't need to build a special tent to meet God. How can we meet God? How is this now possible?

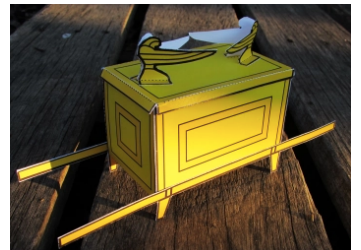
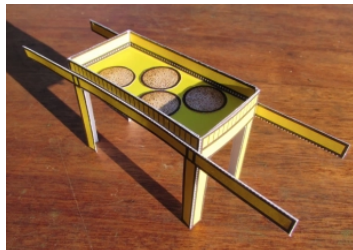
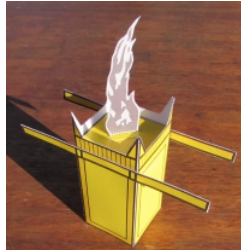


Give thanks & pray

This week's 'building' challenge

For Youth & Older kids

Print out the "Altar, Ark, Lampstand and Table worksheets" attached to make models of the tabernacle furnishings. Then build a model tabernacle and courtyard using lego, tent or any other material to put them in like Kate did in the kids talk.



For younger kids

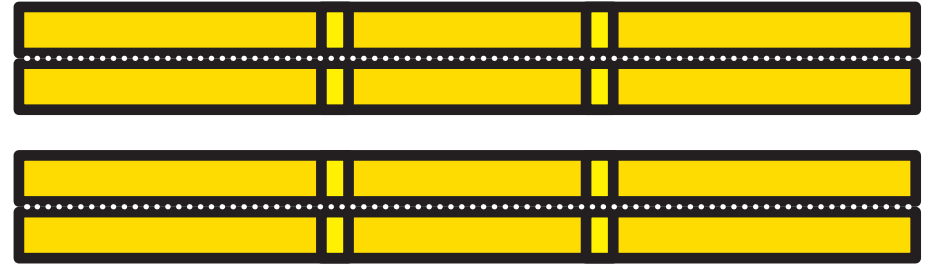
Print out the model "tabernacle and courtyard worksheet", colour it, cut it and build it with your parent's help.



Take a photo of your built models and send your entry to Lucy by Friday (11/09) midday. The most creative tabernacle will be announced in next Sunday's livestream.

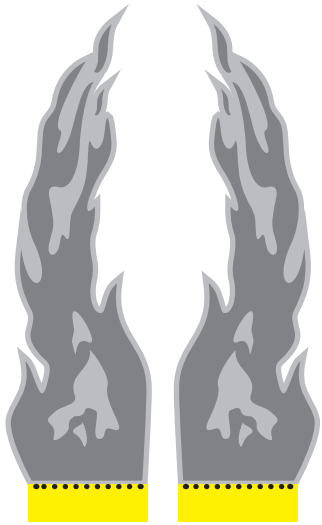
THE ALTAR OF INCENSE

THE ALTAR OF INCENSE



© Mark Barry 2014 | visualunit.me | Please do not republish without permission, but feel free to copy for personal use.

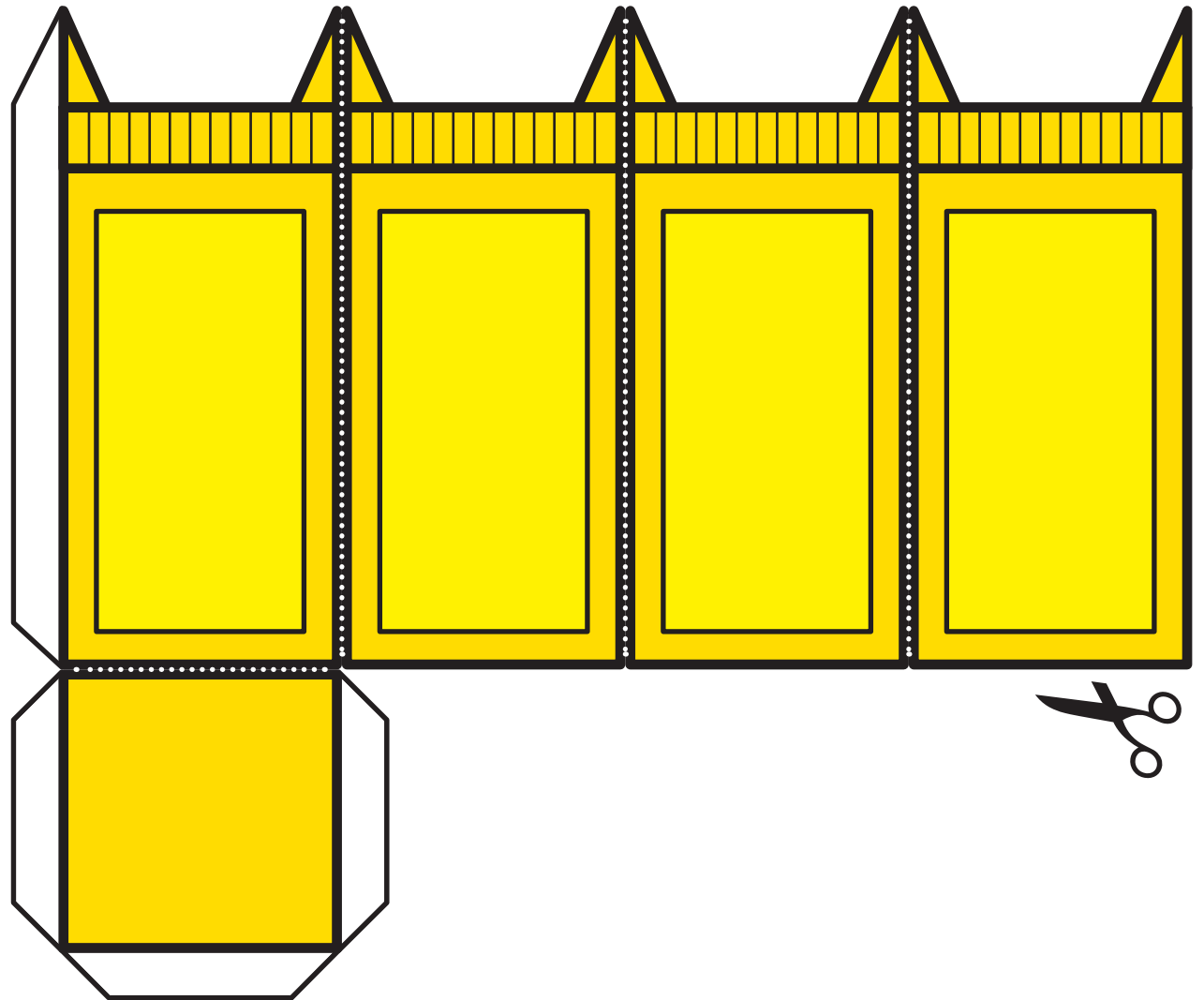
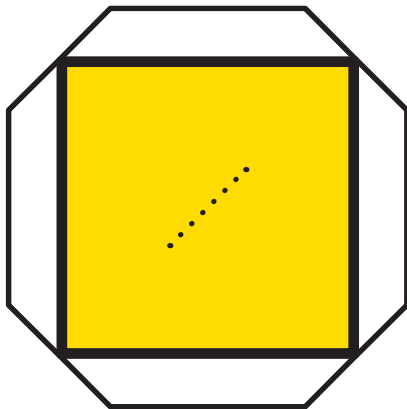
EXODUS 30:1-10; 37:25-28



LENGTH =
1 CUBIT
1 1/2 FEET
0.5 METRE

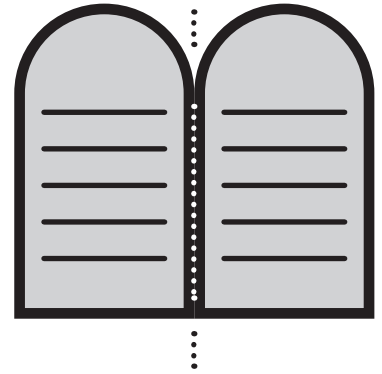
WIDTH =
1 CUBIT
1 1/2 FEET
0.5 METRES

HEIGHT =
2 CUBITS
3 FEET
1 METRE



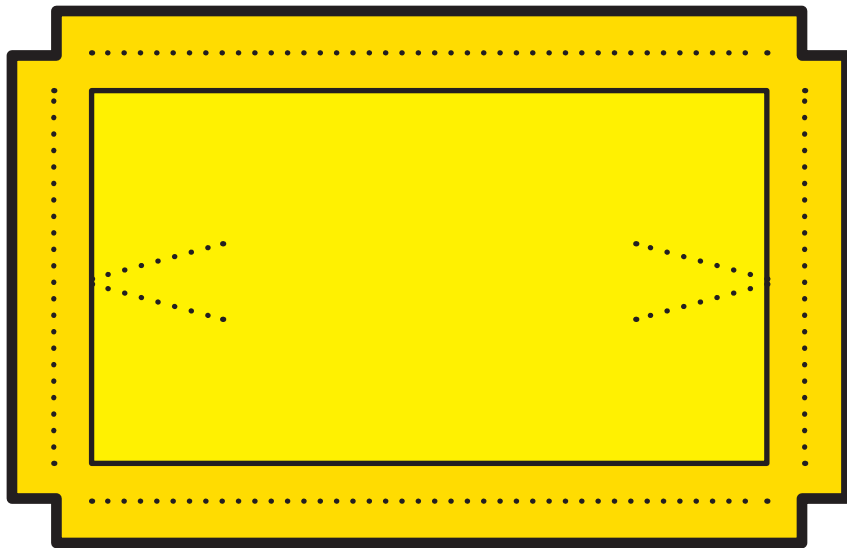


POLES & FEET



TABLET OF THE COVENANT LAW

LENGTH = 2.5 CUBITS | 3 3/4 FEET | 1.1 METRES



ATONEMENT COVER

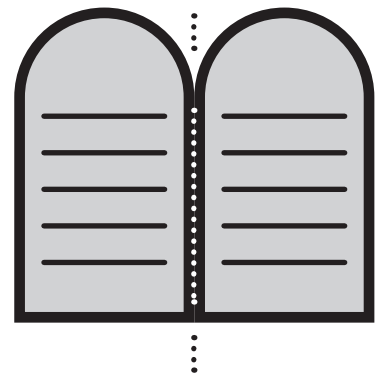
EXODUS 25:10-22



© Mark Barry 2014 | visualunit.me | Please do not republish without permission, but feel free to copy for personal use.

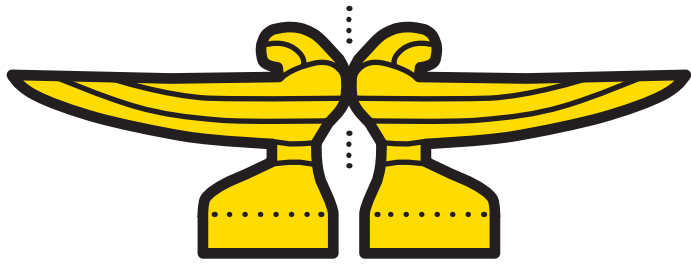


POLES & FEET



TABLET OF THE COVENANT LAW

THE ARK | LENGTH = 2.5 CUBITS | 3 3/4 FEET | 1.1 METRES

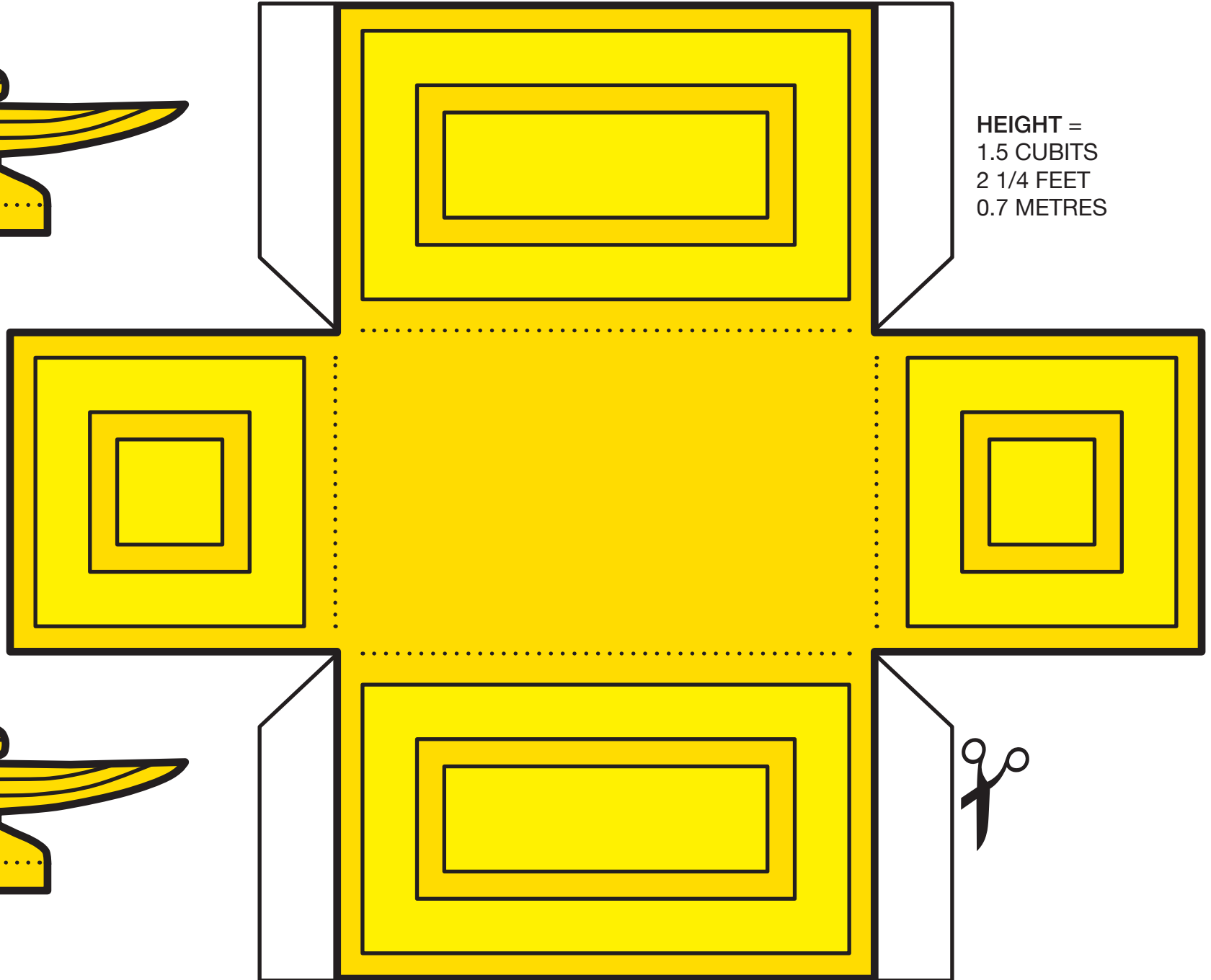


CHERUB

WIDTH =
1.5 CUBITS
2 1/4 FEET
0.7 METRES



CHERUB

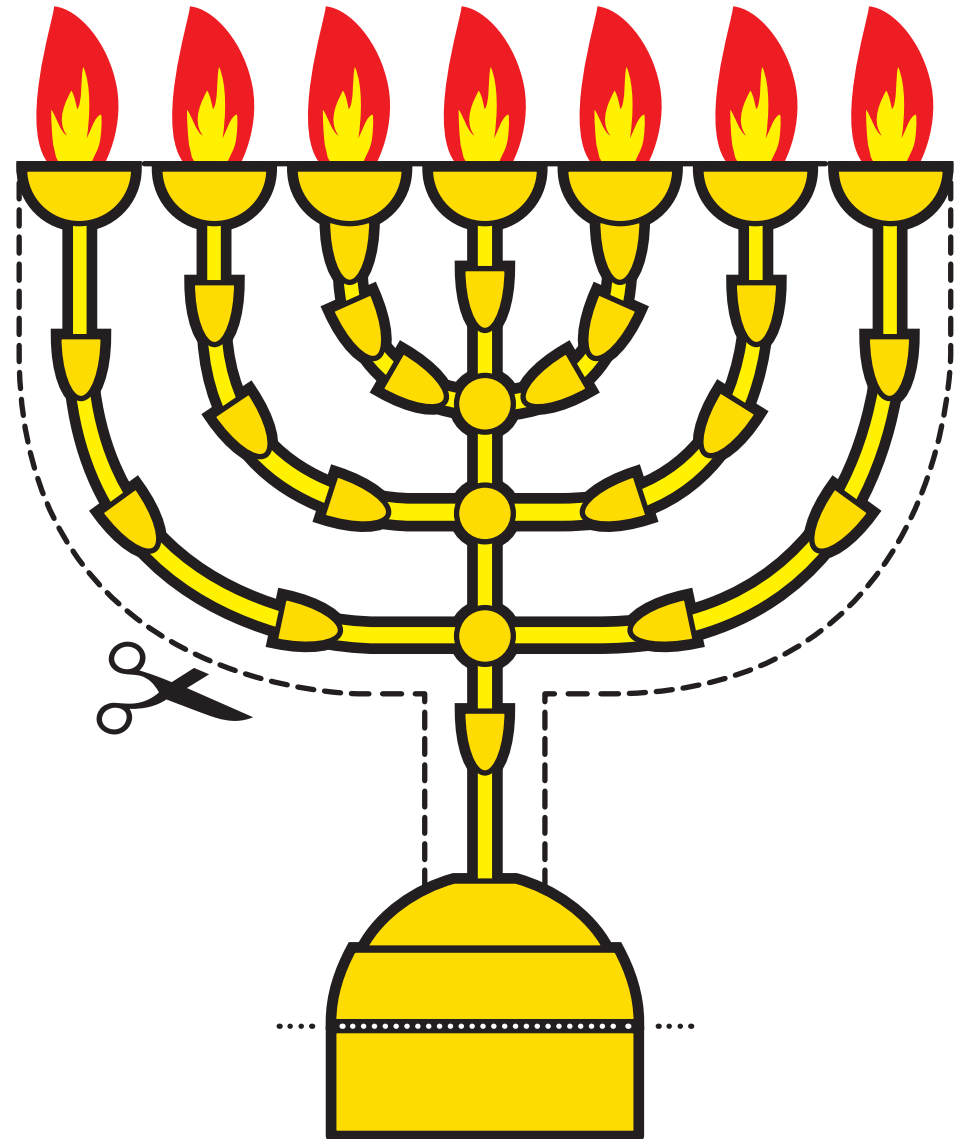
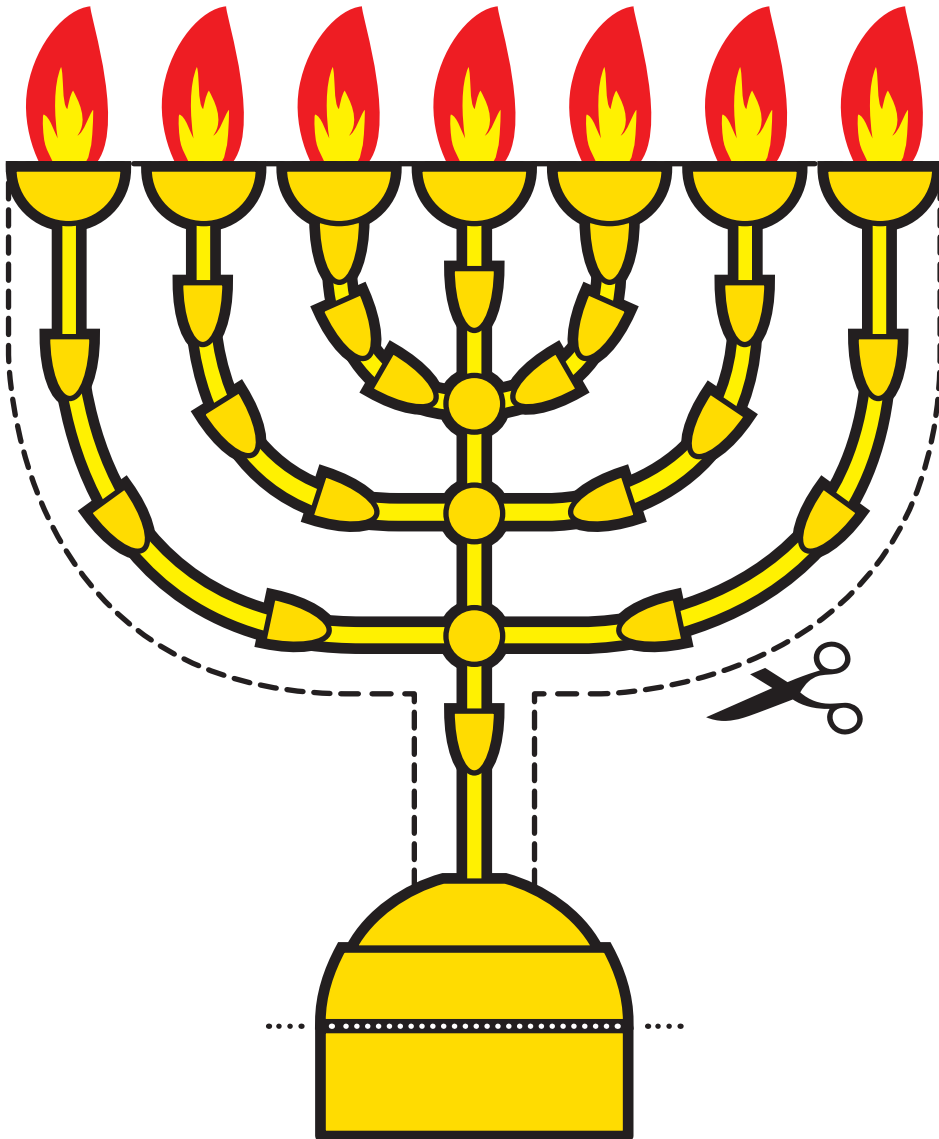


THE GOLDEN LAMPSTAND

THE GOLDEN LAMPSTAND

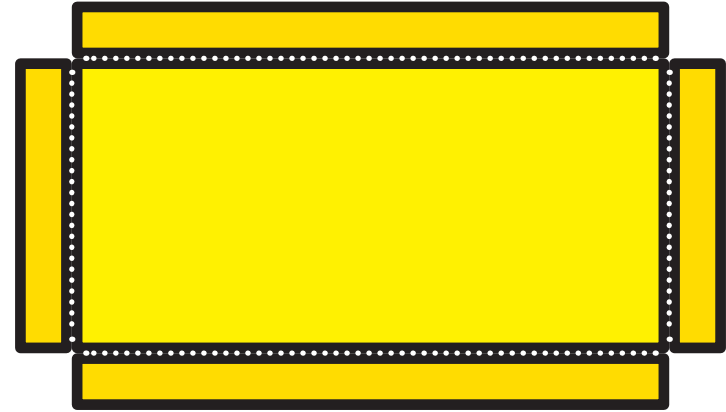
EXODUS 25:31-40

© Mark Barry 2014 | visualunit.me | Please do not republish without permission, but feel free to copy for personal use.



THE TABLE FOR BREAD

THE TABLE FOR BREAD



© Mark Barry 2014 | visualunit.me | Please do not republish without permission, but feel free to copy for personal use.

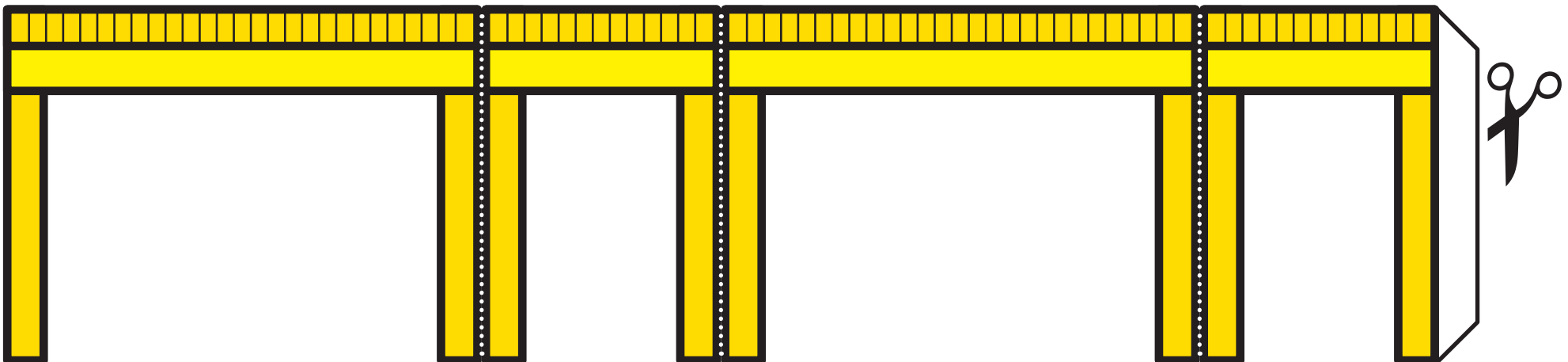
EXODUS 25:23-30; 37:10-16



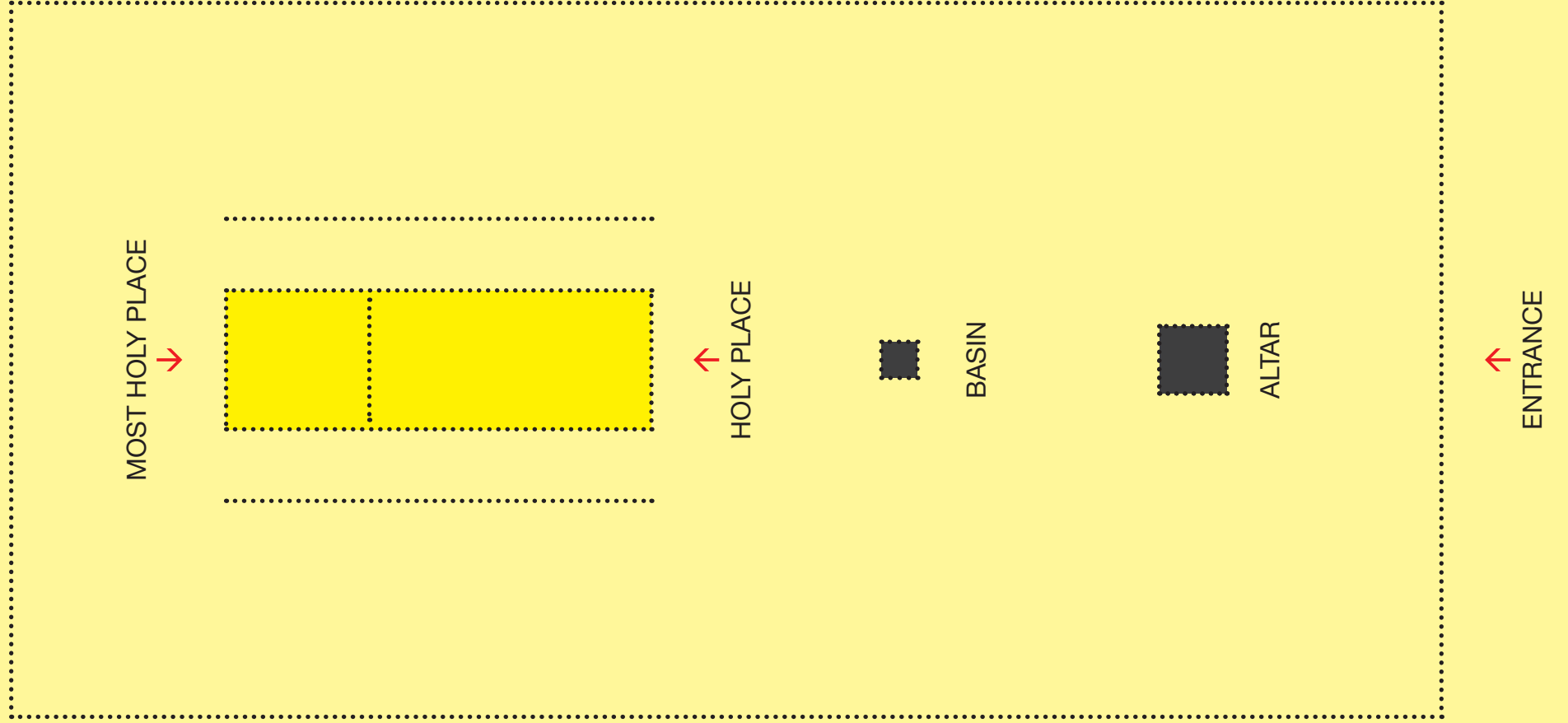
LENGTH =
2 CUBITS
3 FEET
1 METRE

WIDTH =
1 CUBIT
1 1/2 FEET
0.5 METRE

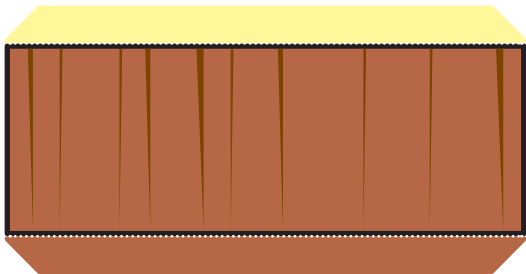
HEIGHT =
1.5 CUBITS
2.25 FEET
0.7 METRE



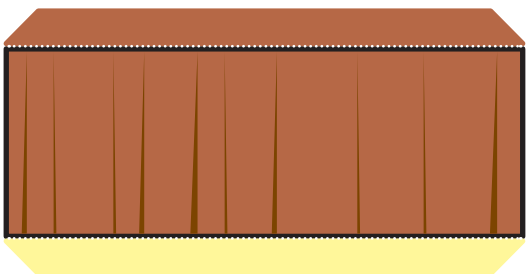
THE TABERNACLE & COURTYARD EXODUS 25-31 & 35-40



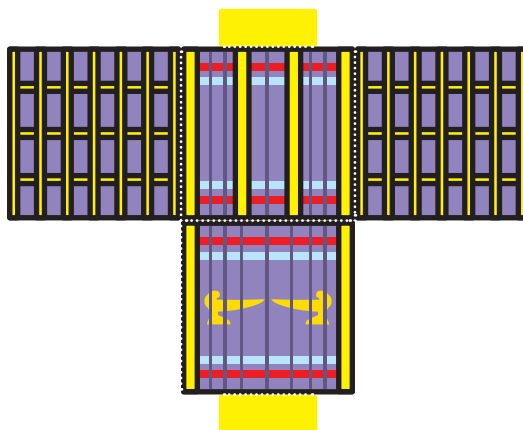
NORTHERN COVERING



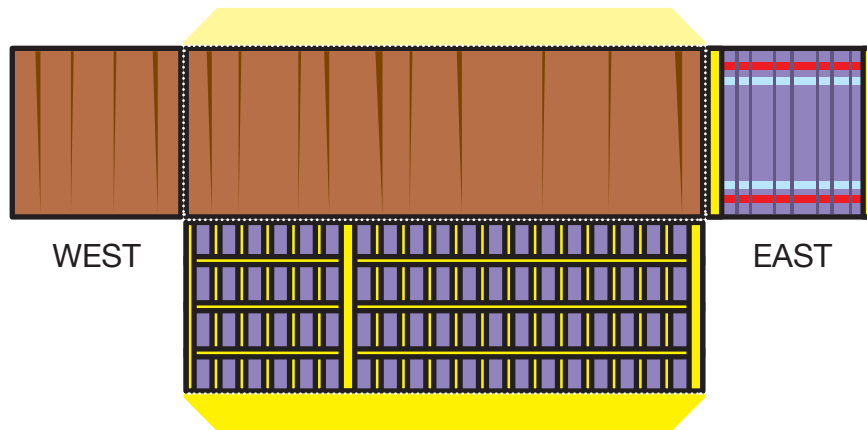
SOUTHERN COVERING



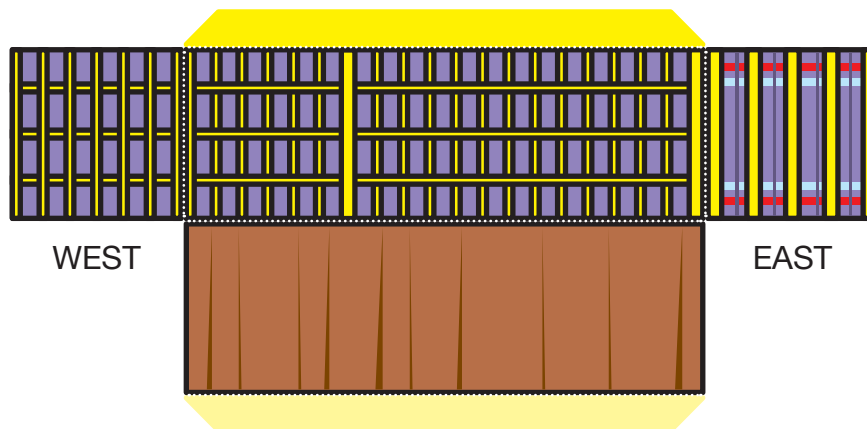
CURTAIN FOR THE MOST HOLY PLACE



NORTHERN TABERNACLE WALL



SOUTHERN TABERNACLE WALL



INCENSE ALTAR



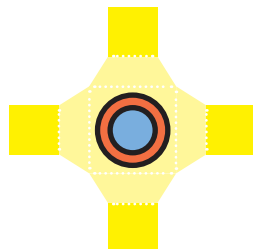
BREAD TABLE



LAMPSTAND



BASIN



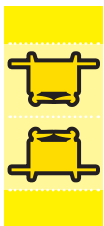
ALTAR FIRE



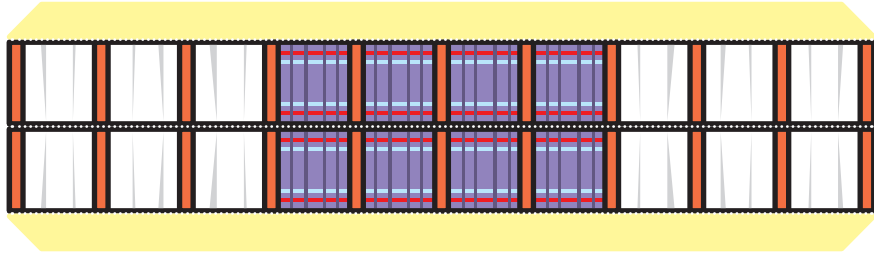
ALTAR



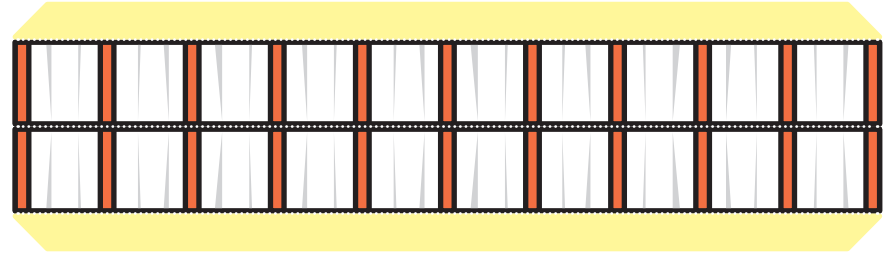
ARK



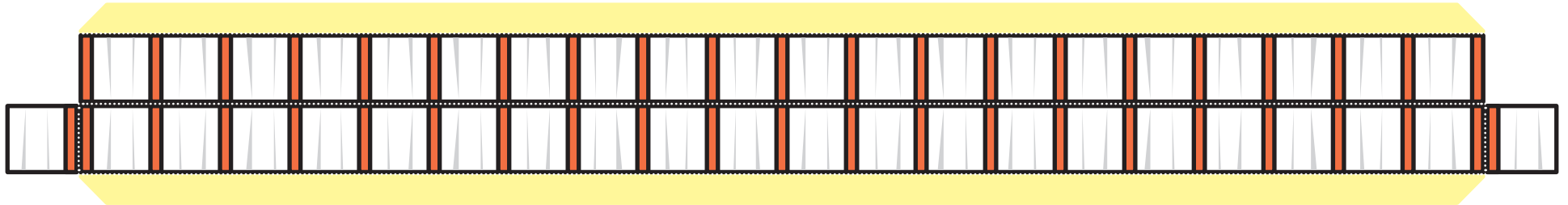
EASTERN COURTYARD WALL



WESTERN COURTYARD WALL



NORTHERN COURTYARD WALL



SOUTHERN COURTYARD WALL

